



# Arts *for* All

## KENTUCKY



### SEASONAL NEWSLETTER

---

AUGUST 2022

VOLUME 5 | NUMBER 3

---

## Now taking applications for the 2022-23 School Year!

Bring a guest artist, musician, or storyteller to your school through the **Arts Inclusion program**

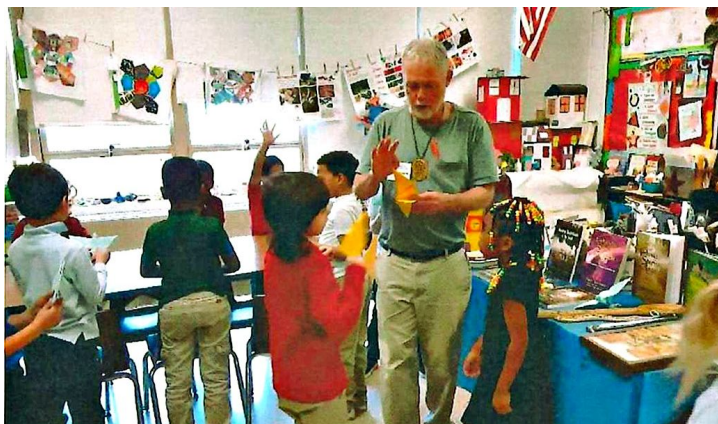
- Enter your students' artwork in the **2023 Student Traveling Exhibition**
- Provide a **Side by Side** program at your school, community center or library
- Offer an After School program, Arts Festival or Camp for your kiddos as a **Special Initiative** project
- Check out our **Resources** and apply. Contact Delaire Rowe at 270-792-0023 or email with your questions. We are happy to help.

## Arts Inclusion Program

Experiential, inclusionary arts projects in creative writing, dance, drama, music storytelling, or visual art. Arts for All Roster Artists collaborate with schools and teachers in designing and implementing residencies that interface with curriculum and enhance learning. 25-30 schools in Kentucky are each awarded \$1400 each year. We have a rolling deadline and approved projects will be awarded on a first come first serve basis. In-person, visual, and hybrid projects will be considered.

**Apply today!**

[More info and applications](#)



"Tribute to the Environment in Poetry, Storytelling, Art & Craft"  
at Wilkerson Traditional Elementary with Thomas Freese.

---

## 2023 Student Traveling Exhibition

# Call for student art!

The Student Traveling Exhibition is an annual exhibit comprised of original artwork created by K-12 students with disabilities in Kentucky schools. The exhibition travels across the state. You can request the exhibition for display at your school! To learn more about the exhibition, or to download the application, click the link below.

[More info and entry forms](#)

## Participating schools include:

- Rosenwald Dunbar Elementary
- Wilkerson Traditional Elementary
- McNabb Middle School
- Adair County Elementary
- Bowling Green Jr. High School
- Newport High School
- Paris Middle School
- Ohio County Middle School
- Hart County High School
- McNeill Elementary
- Foley Middle School
- Frankfort High School
- Lewis County Central Elementary
- Sharp Middle School
- Williamstown Elementary
- Madison Southern High School
- Munfordville Elementary
- Greenwood High School
- Homeschoolers



## Special Initiative Projects:

**Summer camps, Festivals, After-school programs, and more...**

[More info](#)



Kentucky Shakespeare provided summer programming at Backside Learning Center in Louisville.



Gyotaku fish printing at Jennings Creek Elementary's summer program in Bowling Green.



# SIDE BY SIDE

Students with disabilities participate in a series of art classes. Then they are partnered with an artist from their community to create collaborative pieces. The final event is an exhibition of all the artists' work. Family and friends are invited to a reception where the artists are recognized for their accomplishments. To sign up or find out how to bring Side by Side to your community, click on More info.



## Last year's program sites:

- Side by Side Online (statewide)
- Kentucky Museum in Bowling Green
- Sims Studio and Gallery in Horse Cave
- Murray Arts Guild
- Oldham Co Schools Arts Center in Crestwood
- Grayson Gallery and Arts Center
- Hogsett Elementary in Danville
- Dreams with Wings in Louisville
- Butler County Arts Guild

[More info](#)

---

## Adults Programs: Arts for All Workshops



We had a wonderful van Gogh paint along at Gallery on the Square in Franklin! Led by Programs Assistant Sonja Byrd, 15 painters made their own sunflower painting in conjunction with the current exhibit from AFAKY featuring paintings of both Monet and van Gogh by adult artists with disabilities. We thank our hosts at the Gallery and all the artists!

## Artist Registry News

Hanna Wright's abstract portraits were exhibited at Bandy, Carroll, Hellige Advertising in Louisville April - June. The Artist Registry is a directory of adults artists

with disabilities living in Kentucky.



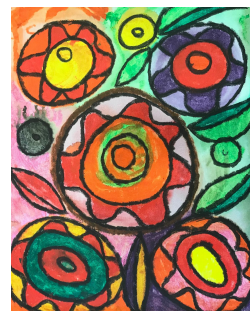
[Artist Registry](#)



## Art On Tour Exhibits

**"Disability Icons & Symbols"** is an ongoing project comprised of collaborative artwork created by kids and adults with and without disabilities. Lawrence County Public Library is hosting the exhibit April through June.

**"Botanical Designs"** is on exhibit at Bandy, Carroll, Hellige Advertising July - September. The pieces are created by children and adults as a walk up activity at conferences and fairs throughout the year. We call them Arts for All Collaborations.



[More info](#)

## Online Resources

### Facebook Live mini workshops

A weekly art activity you can follow along at home or in class. Accessible lessons for artists of all abilities. We explore a variety of media and subjects.

[Facebook page](#)



### Video Workshops

Check out our catalog of video workshops! Our many talented Teaching Artists helped us create videos featuring a variety of arts forms including Music, Drama, Storytelling, Dance, and Visual Art. These workshops can be used in the classroom or from home. It's also a good way to become acquainted with the work of our Teaching Artists.



Video catalog

## Monthly Podcast

Join us for Arts for All KY Stories as we talk with all the folks that participate in our programs and organization. Arts for All Stories offers a variety of perspectives and experiences from artists, students, parents, teachers, Board members, and more. We love learning about how our programs have impacted the lives of so many.

**Arts for All KENTUCKY STORIES**

**Episode 13**  
*Fired Up for the Arts*  
with Suzanne Renfrow & Delaire Rowe

**New Episode Available Now!**

We're continuing to share the stories of how we impact the lives of students, teachers, families, and communities through creating accessible arts opportunities.

**Episode 13 Available Now!**

LISTEN ON ANY OF THESE PLATFORMS

YouTube Spotify Apple Podcasts

Listen

Also Listen on [Spotify](#) or [Apple Podcast](#).

**Stay informed, Follow and Like  
Arts for All Kentucky on [Facebook](#)!**

Arts for All Kentucky was delight to receive a grant from the Community Foundation of South Central Kentucky for our workshop series serving adults with disabilities throughout the BRADD region.



Please consider selecting Arts for All Kentucky as your charity of choice while you shop on Amazon.com. It is free of charge and helps raise urgently needed funds to support our programs across Kentucky.

**amazon**smile

Get Started!



# Thank you!



The Kentucky Arts Council, the state arts agency, provides operating support to Arts for All Kentucky with state tax dollars and federal funding from the National Endowment for the Arts.



Arts for All Kentucky | P.O. Box 3320, Bowling Green, KY 42102

[Unsubscribe\\_programs@artsforallky.org](mailto:Unsubscribe_programs@artsforallky.org)

[Update Profile](#) | [Constant Contact Data Notice](#)

Sent by [programs@artsforallky.org](mailto:programs@artsforallky.org) in collaboration  
with



Try email marketing for free today!